

BIOLUMINESCENCE PHENOMENON – „LIGHT FROM LIGHT”

Mariana Daniela MANU*

Rezumat. *Articolul este rezultatul unui program doctoral unic în România și în Europa referitor la studii multidisciplinare despre interferența lumină vie – materie; principii laser – holografice ale structurii și funcționării sistemelor biologice; interferența lumină/bioluminiscență (BL) – materie vie și caracteristicile BL ca „laser biologic” (fenomen științific și religios). Se discută rolul tipurilor de sisteme de laser biologic în îmbunătățirea puterii bioluminiscenței: informație și caracteristici, trecerea de la procesul fizic la cel psihic al vieții, creșterea puterii și a informației. Dezvoltarea studiilor științifice permite acum reevaluarea patrimoniului cultural al vechilor civilizații și a posibilelor contacte cu civilizații extraterestre.*

Abstract. *The paper relieves the results of unique doctoral studies in Romania and Europe, dealing with fundamental multidiscipline studies about the light-living –matter interference: • laser-holographic principles of structure and function of biological systems (as nonlinear mediums); • light (L) / bioluminescence (BL) –living matter systems interference and the characteristics of BL as „biological laser” – scientific phenomenon and a religious one – „light from light”. It is discussed the role of those ten types of biological laser systems to filter and improve step by step the bioluminescence power – information and characteristics, the passing from physic to psychic processes of life and increasing of powers and information. The development of scientific studies permit now to reevaluate the cultural patrimony of ancient civilizations, possible contacts with extraterrestrial civilizations, which last proves of an advanced science, today disappeared, and whom symbols were survived.*

Keywords: bioluminescence, natural laser systems, biological laser systems, biological laser phenomena

1. Introduction

The most complex and power BL form is known as the name of „the God”. It belongs to the ten-th type of Biological Laser System – Universal BLS, which is formed by all biological filters (humans, animals, plants) from all planets, of all galaxies of the Universe, because they all have „the same face and similitude”, that are correspondent to the same laser – holographic principles of structure and function of the Biologic Laser Theory.

The basic knowledge was delivered from the most advanced physics domains as: lasers, holography, nonlinear optic, liquid crystals, and electronics. For that I had to formulate the Manu–Stănculescu Biologic Laser Theory

*Ph.D. in Biology, University „Al.I. Cuza” of Iași, and the National Institute of Inventics, Iași, Romania.

hypothesis, to verify them personally by original tests, using biophotonic and electronic methods (at International Institute of Biophysics Neuss, Germany, 2003), tissue – anatomically method for verifying them the thermodynamic method (the last method was necessarily some improvement as using the nonlinear optics in thermodynamic process).

The BLT is a part of a large theory – Natural Laser Theory (NLT), according to which the (physic) Universe is formed by “natural systems and phenomena” at cosmic level, that are interfere with the light or other form of energy - generating secondary phenomena (chemical, electric, magnetic and photonic); the light is an intermediary form of cosmic power and substance, a visible form, with properties of frequency, power and information changing when it is passing from one system to another.

There are discussed the links between: the biologic laser systems properties; the laser properties of bioluminescence. So we may talk about the Earth Genesis (terrestrial, aquatic, and atmosphere) natural laser systems, with manifest natural laser phenomena (holographic, thermal, plasma laser, diffusion, chemical, electric, magnetic and photonic effects), that conduct us to the idea that laser principles were known by more civilizations, which have the same data about “the Earth Genesis”.

There are discussed the lost significations of ancient symbols. The symbols are graphic rendered and discussed: the cross as a sign of the life not of the death; some sintagma (“light from light”, “poor, (but) in soul and spirit” etc.). Why do you believe that the” ten tables of the low” were kept in the “the law cheviot”?

The science has to defend the soul as the cheviot” defend the laws. The development of scientific studies permit now to reevaluate the cultural patrimony of ancient civilizations, possible contacts with extraterrestrial civilizations, which last proves of an advanced science, today disappeared, and whom symbols were survived.

Thousands of years ago all these were known, and were transmitted by religions of the Earth for different parts of the Globe, but in time they lost the science significance, being understand only by initiate (in a smallest world), that let us some symbols, revealed now in new scientific domain: in nonlinear optic – caduceus; the intricate spheres; in chemistry – the cross, in physics- the David Star, etc.

For all these it is necessary an International Institute of Bioluminescence IIBL at Iași, Romania, unique in the world, which has to continue the bioluminescence studies, to apply it for regenerative medicine, genetics, oncology, ophthalmology, neurology, psychiatry, embryology, chemistry, physics,

bionics, cybernetics etc.

Some philosophers ask the rhetoric question – „exist a thinking way till the God [TDS, 1990]?”. How much people may response at this question by them, out the God help? If the people have knowledge limits, and the God know everything that are existing, it is possible to find the answers if we are praying? Yes, and more than it is believable. I remembered the bible word – the God Iisus Hristos has attention us – „you have to ask and you will be gifted”, and Hristos said „I am the Way, the Truth and the Life”.

So if He is „the Way”, with his help I could understand „the truth” of this world, which we are seeing or are not seeing. So, I asked Him to excuse me and to „illuminate” me, to help me to find the answers at medicine and biology problems as: the modality of the Light influence over the Life, biophysics’ mechanism of bioluminescence, the Life Genesis mechanism; the cell division and differentiation, trans-membrane changing of substances, the water photolysis, genetic codification, water photosynthesis, the links between the physical and the psychical processes; the sight, memory and thinking processes; the telepathy; communication human–animal, human–plants; energetic transformation; the links between the outside Light power and information and the inside Light (bioluminescence) power and information; genesis of the living matter system forms (shape)and movement; the action of gravity on the living matter systems, the link between the human and God, the light properties, etc. Because there are lacking the bioluminescence knowledge, are lacking a quarter of biology and medicine knowledge.

The answer at biology and medicine problems were to be founded at the limits between sciences, but many others were kept secret in religious knowledge, a few initiates.

History of the light science

All over the world exist proves of an advanced science about the light and it’s properties, beginning with „ The Death See Manuscript”, and a few archeological proves which today are considered as art objects of an disappeared civilization (Maya, Aztec, Mu continent of Pacific Ocean, Etruscan people), which symbols are common with those of nonlinear optics, lasers, cosmic navy. In present in the world exist 40 collectives of bioluminescence research, biophotonics, and now, to Iași exist two collectives, at „Alexandru Ioan Cuza” University, so that we the Romanian scientist have a contribution in this direction.

I begin with a question: may bioluminescence BL be represented by” light from light” syntagma as origin of BL? May this syntagma be an expression of laser phenomena? It’s possible. Tens of years the BL was considered „ the energy is loosing”, that results from biochemical process, muscles, fermentation, that done as BL study to lack. But the reality was over the prejudices.

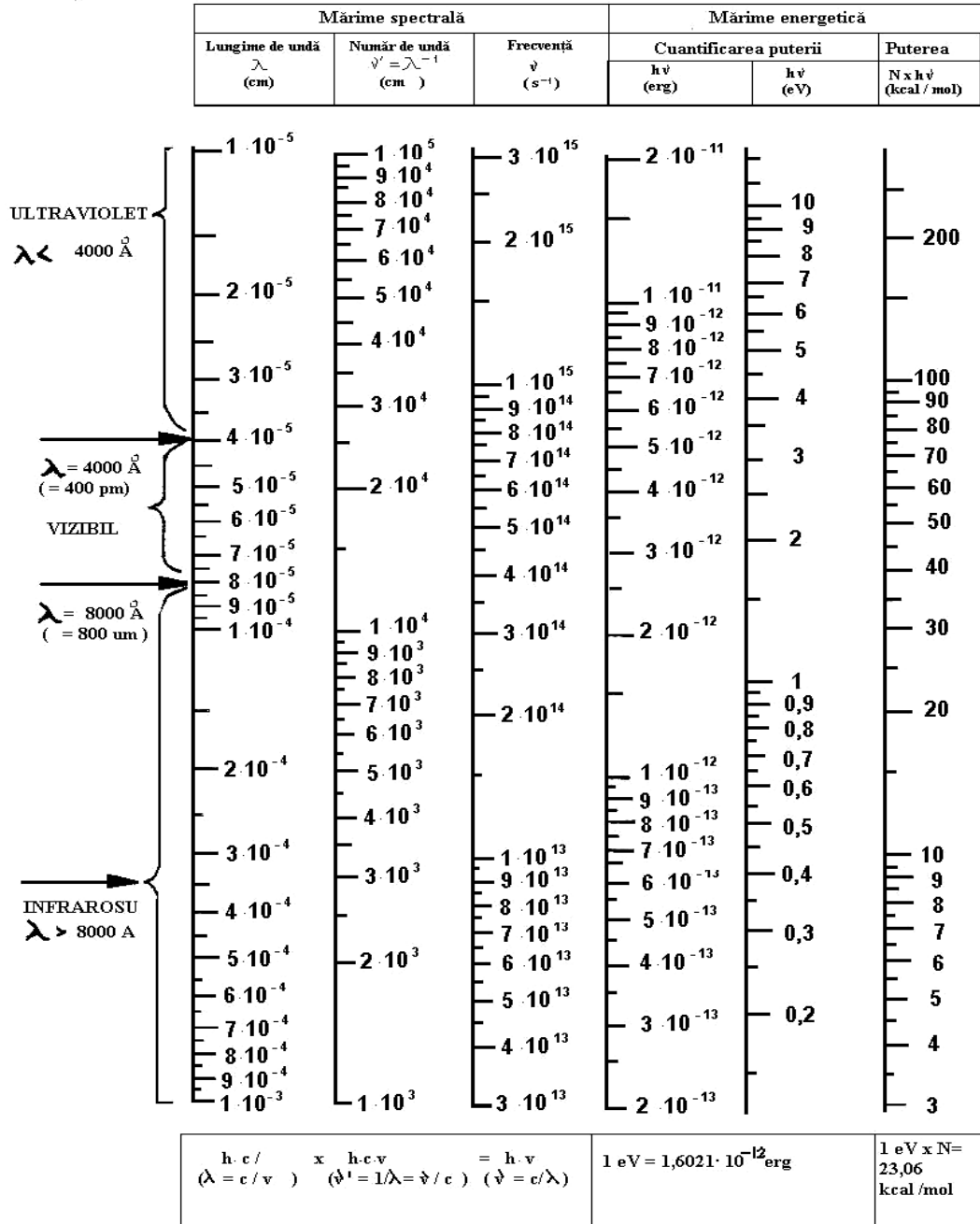
After much analysis and synthesis I formulated The Natural Laser Theory (NLT) [Manu, 1993, 2005] an ample theory, and the Manu - Stănciulescu Biological Laser Theory (BLT). Both theories have a common element – the light or bioluminescence interference with the mineral or living systems. According NLT (physic) the Universe is formed by „natural laser systems”, which have „natural laser phenomena” *at cosmic level*, and are activated by the light and other energetic forms of energies.

At this type of process is connected the „Earth Genesis”, as (terrestrial, aquatic, atmospheric) „natural laser systems”, which have their own „natural laser phenomena” or chemical, electric, magnetic, and photonic (holographic, thermal, plasma laser, diffusion etc.) phenomena. The light has an intermediary position on the energetic and spectral measures scale (**tab. 1**) [C.D. Nenițescu, 1985], but according to Biologic Laser Theory BLT too (**fig. 1, tab. 2**). So, the cosmic and living systems have nonlinear medium properties, and exist possibility to change frequency, energy and information amplification from one system to another (**fig. 1**) (frequency modulation and amplitude modulation), polarization, birefringence (ordinary and extraordinary rays, with different refraction angle), dispersion, secondary effects (chemical: polymerization, isomerization, hydrolysis; electric; magnetic, photonic) etc.

The cosmic / living matter systems have nonlinear optics qualities and at the interface of two systems in touch they may change: frequencies, modify the power and information (**fig. 1**) as (frequency and amplitude modulation), polarisation, birefringence (ordinary and extraordinary rays) for different refraction angles of refraction and reflection, dispersion, secondary effects (chemical: polymerisation, isomerization, hydrolysis; electric; magnetic, photonic) etc. The living systems are activated by the Sun light, but also the artificial light too. There are a lot of archeological marks, symbols and syntagma, proverbs that are indicated the idea of an ancient (disappeared) well-known knowledge about the „laser-holographic principles of structure and functioning of cosmic systems and living systems” , and they were transmitted as a patrimony to the actual civilizations. All these have similar data about the bible „Genesis”.

But any advanced is the present science, „a lot of holes” remain to be reformed. Such is the case of medicine and biology. The studies of the living matter bioluminescence were based on medicine and biology, and the advanced studies of physic as: laser, holography, nonlinear optics, liquid crystals, and electronics.

Though the peoples are using lasers for diagnosis and treatments, *laser-holographic principles of structure and function* are specific for the living matter systems, according the Biologic Laser Theory hypothesis.



$E_{\text{ATP}} = -7,3 \text{ kcal} \cdot \text{mol}^{-1} = 0,317 \text{ eV (IR)}$
 $E_{\text{glicoliză}} = 686 \text{ kcal pentru 1 mol glucoză (E liberă)} = 93,973 \text{ eV (UV)}$
 $E_{\text{NADH}} = -52000 \text{ cal} \cdot \text{mol}^{-1} = \Delta G^{\circ} = -52 \text{ kcal} \cdot \text{mol}^{-1} = 2,255 \text{ eV (verzu)}$
 $1 \text{ eV} = 23,06 \text{ kcal} \cdot \text{mol}^{-1} \text{ (IR)}$

Table 1. The linear scale of the light power and spectral measurements [Nenițescu C.D., 1985, p.1223].

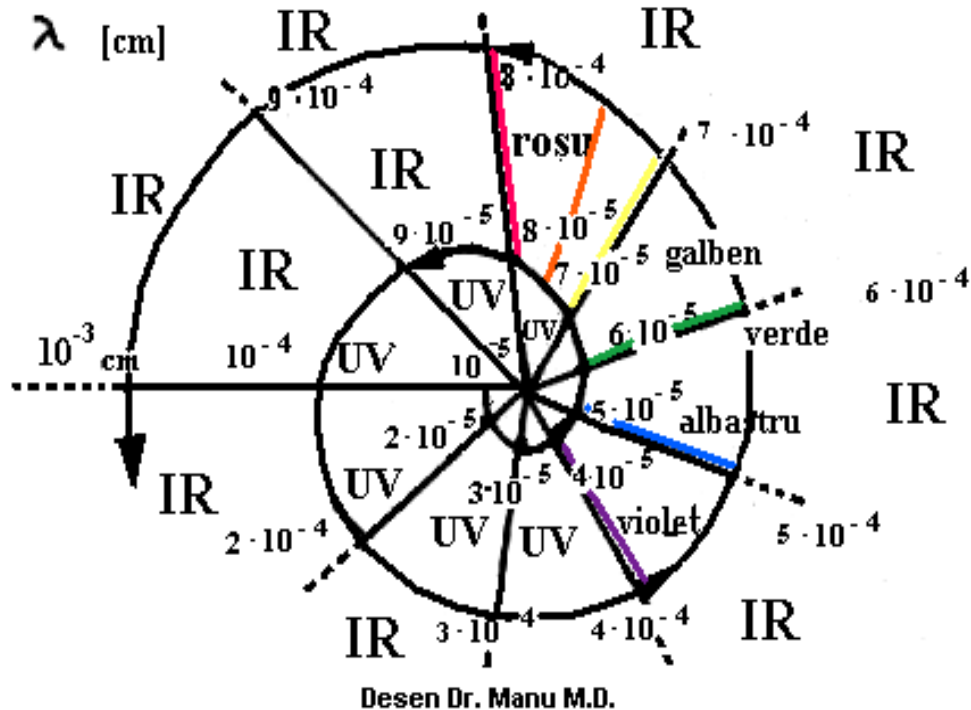


Figure 1. The logarithmic scale translates the linear scale of the light power and spectral measurements, according to the Biologic Laser Theory and explains the light amplification from system to another [Manu, 1995].

❖ *To exist light, the source of bioluminescence as optical power and information, that is emitted by the living matter, as „light from light”, by the „biological active laser substance” as semiconductor molecular type, for high and low temperature or BLS sem mol, as phosphate–water–oxygen, sulphate-carbon dioxide and nitrates/nitrites etc. After the external optical stimulus action and absorption are following the secondary light emission, which depends on incident factors, according to nonlinear optics and liquid crystals properties: light, temperature, pressure, pH, electric and magnetic field.*

❖ *To make evident the „biologic laser active substance” (BLAS) with absorption- emission and amplification of radiation but sensitive at visible (UV, visible, infrared) spectrum, I had to identify the substance that exist in all biological systems (cellules, organs, organism) which is able of stimulated emission and amplification of radiation, the frequency and amplitude modulations of radiation, that depend of extern medium light and temperature.*

Table 2. Lasers and holography properties of the biological systems as nonlinear optics systems, according The Biologic Laser Theory TLB (Original table, author Doctor in biology Dr. Manu M.D., 2004)

Organism BLS	Organ BLS	Cellular Cell BLS	Nuclear BLS	Membranar Mbr BLS	Sem Mol BLS	Type of the biologic laser system	Domain
+	+	+	+	+		Birefringence	Nonlinear Optics
+	+	+	+	+			
+	+	+	+	+		Rotary polarization	Physic properties of the liquid crystals
+	+	+	+	+			
+	+	+	+	+		Selective reflex ion	Lio-trop ADN / ARN I.c.
+	+	+	+	+			
+	+	+	+	+		Micelles in water	KDP anti-Stokes rule, E↑ with T°↑
+	+	+	+	+			
+	+	+	+	+		Optic memory	KDP Stokes rule, E↓ cu T°↓
+	+	+	+	+			
+	+	+	+	+	+	Auto-focalization	Principle of structure-Source of light or laser - Laser active substance (phosphate-water-molecular oxygen) Molecular source of bioluminescence (sistem tampon)
+	+	+	+	+	+		
+	+	+	+	+	+	Auto-filament	Technique Laser Systems
+	+	+	+	+	+		
+	+	+	+	+	+	E ↑ amplification as modulation of - frequency - amplitude	Secondary laser effects due to light or BL interference with proper sources of BL
+	+	+	+	+	+		
+	+	+	+	+	+	Decreasing of growing, division, apoptosis	Holographic Systems
+	+	+	+	+	+		
+	+	+	+	+	+	Principles of laser function: 1. Coherence	Communications on optic fibers (of
+	+	+	+	+	+		
+	+	+	+	+	+	2. Monochromaticity	EM oscillations amortize system.
+	+	+	+	+	+		
+	+	+	+	+	+	3. Directionality (to focus)	Liquid crystal matrix (cell membrane) as film support
+	+	+	+	+	+		
+	+	+	+	+	+	4. Intensity	
+	+	+	+	+	+		
+	+	+	+	+	+	1. Holography eff. + BEMPh eff.	
+	+	+	+	+	+		
+	+	+	+	+	+	2. Laser thermal effect	
+	+	+	+	+	+		
+	+	+	+	+	+	3. Laser plasma eff.	
+	+	+	+	+	+		
+	+	+	+	+	+	4. Ather effects	
+	+	+	+	+	+		
+	+	+	+	+	+	Amplification system role	
+	+	+	+	+	+		
+	+	+	+	+	+	Stimulation role	
+	+	+	+	+	+		
+	+	+	+	+	+	Excitation state maintaining	
+	+	+	+	+	+		
+	+	+	+	+	+	Chromaticity and spheroid aberrations correction	
+	+	+	+	+	+		
+	+	+	+	+	+	Optic track – dispersion, helicoids track	
+	+	+	+	+	+		
+	+	+	+	+	+	KDP, elastic membrane	
+	+	+	+	+	+		
++	++	++	++	++	++	BEMF Memory BEMF secondary effects	
++	++	++	++	++	++		

I identified (**fig. 2**) as *molecular biological laser system* a semi conductive groupe with nonlinear laser properties (sem. mol. BLS), as complex Phosphate-Water-Molecular Oxygen, a three molecule complex, that is emitted the luminescence both for high and low temperature:

1) Phosphate [PO₄] has a double link P=O and three simple link P—O, the cross type form †, and it is a sign of life in biology and medicine, not a death sign as in Christianity religion; the phosphate presents a nontoxic form of phosphorus in the living systems or „the intermediary molecular system” between mineral and living matter, living matter and light, light and life, being sensible at visible spectrum, and a great capacity of light absorption and emission (UV, visible, infrared, 200 nm - 800 nm) – that I proved by biophotonic spectrum; an intermediary between I consider that the God Sun (Iisus Hristos), clear seeing, has previewed the cross sign importance for peoples, owing to his crucifying and revive.

2) Water and molecular oxygen are entertaining the BL, which explains why water and oxygen are important for life entertaining. The water is absorbing the greatest quantity of light power form all other type of substances, and together they form a molecular group that tension the π met stabile electron of phosphorus, that creates a laser effect in a molecular semi conductive laser diode.

3) The activators as K, Na, Cl, Mg, Ca, Fe +3, I, B, Zn, Cu and luminescence inhibitors Pb, Cr, Mo, W, etc. have to adjust the light intensity emission in medium they are. The BL (biophotons) is emitted by sem. mol. BLS under the light (photons) / or the BL (biophotons) stimulus action.

4) The buffer systems are based both on phosphates, and carbonates, sulphates, nitrates, nitrites, which have optical amortizing role (BL absorption), neutralization of secondary effects (as biochemical, electric, magnetic, photonic effects), that is vital for new fronts of optic stimulus action and permit the succession of images as a dynamic aspects of „moving”.

❖ The liquid crystals of membranous as thin layer, which have optic, electric, magnetic specific properties, which may modify the quality of radiation that is passing through the thin layer of LC, with special properties: rotary polarization, sense of rotary, oscillation plan, birefringence (ordinary and extraordinary rays), monochromatic, coherence.

❖ LC has nonlinear medium properties as: rotary polarization well represented by „caduceus” sign, the intricate spheres or dolls (more and more as volumes).

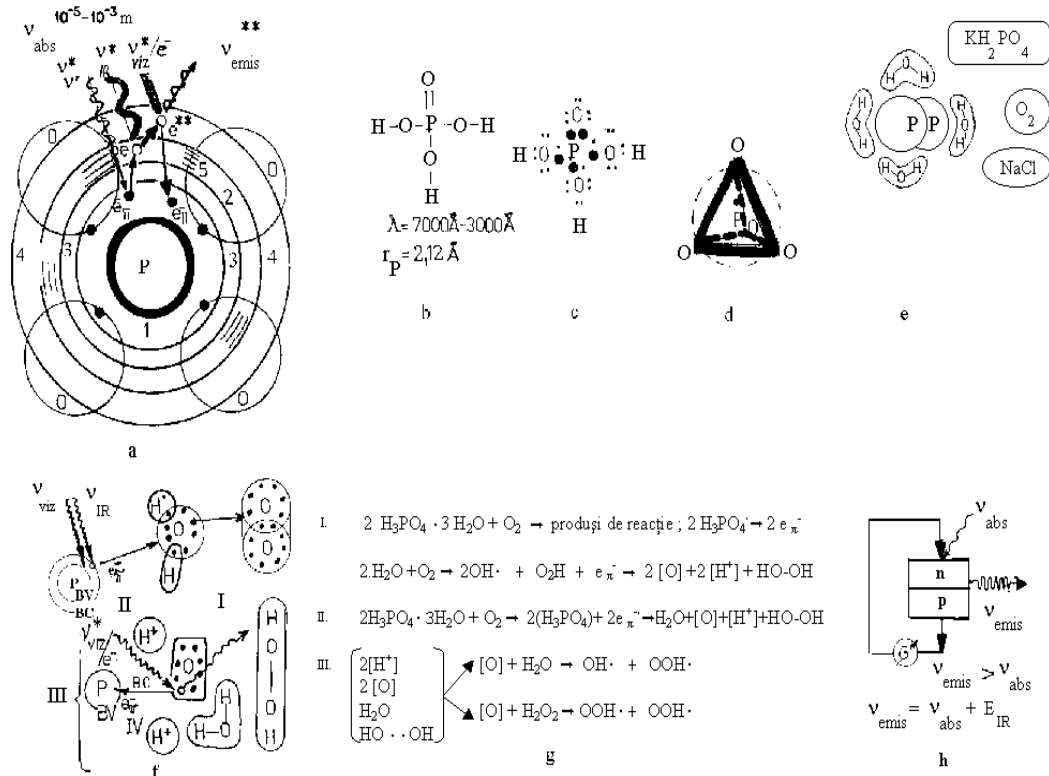


Figure 2. The light absorption and emission of a „biologic laser active substances” phosphate-water-molecular oxygen or Semi conductive Molecular Biological Laser System (sem mol BLS) $[PO_4-H_2O-O_2]$ and it’s secondary BEMPh effects: representation of the atomic rays and conductive, interdicted and valence bands for phosphorus and oxygen atoms of PO_4 group (a, f, h); simple and double links representation (c) of phosphate molecule render the cross similar model; water (4 molecules) and molecular oxygen distribution around the two molecules of phosphate in phosphoric acid (e); the order of the electrons tension in molecular group $[PO_4-H_2O-O_2]$ and secondary effects on phosphate- water-molecular oxygen the semi conductive molecular active substance (f,g) consists in the appearance of electrons, protons H^+ , $(OH \cdot)$, $(OOH \cdot)$, $(HO-OH)$; The laser emission at Semi conductive Molecular Biological Laser System level is similar to a laser diode (h) (original design Dr. Manu Mariana Daniela, 1993)

It is possible to talk about:

a) The structural and functional properties of the living matter systems in Biological Laser Theory BLT – are conducted by structural and functional principles of laser systems. Laser type structure is proved by the same components as laser system (**fig. 3, fig. 7a**): laser resonator, biological laser active substance, optic pump system (source of light, obstructers), cool system (water, blood, and lymph), liquid crystals thin film as screen for the optic memory etc.

b) Functioning on laser – holographic principles (**tab. 2**) as energetic amplification by frequency modulation and amplitude modulation is directing the

optic track and bioluminescence qualities, and they are depending of: system form, structural composition, optic active properties of the membranous liquid crystals.

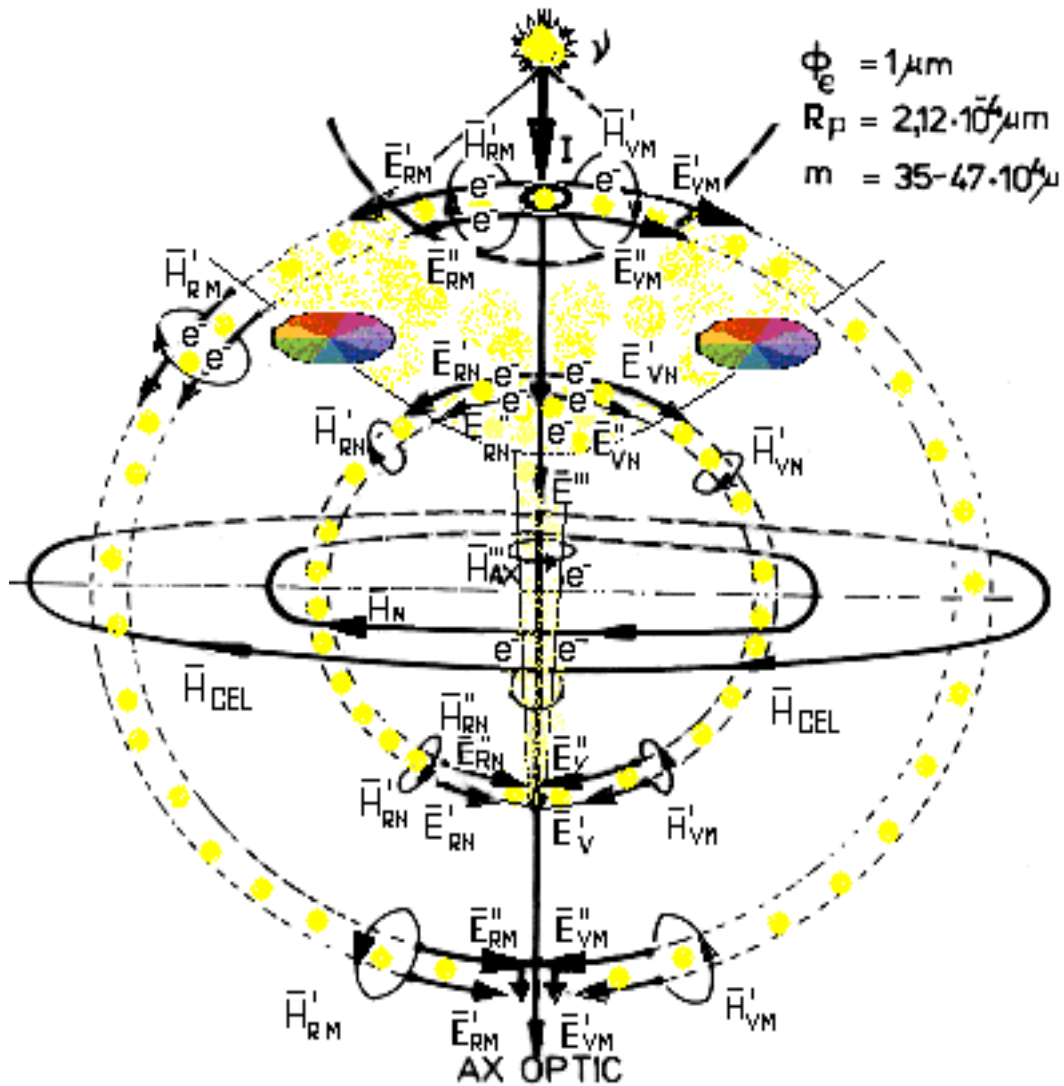


Figure 3. The light distribution from the points of impact with the cell membrane, and laser transforming into bioluminescence at the cell level, as coherent, monochromatic, power amplification of radiation when they are directed to the cell focus; power and spectral (informational) transformation as a nonlinear phenomena (original design Dr. Manu M.D, 1995).

An old symbol of Judaism as David Star \blacklozenge is corresponding in LASER physics to the light oscillation modes $THEM_{03}$ ($THEM_{mn}$) (**fig. 4**), inside a laser resonator with circular or square mirror [B. Lengyel, 1968].

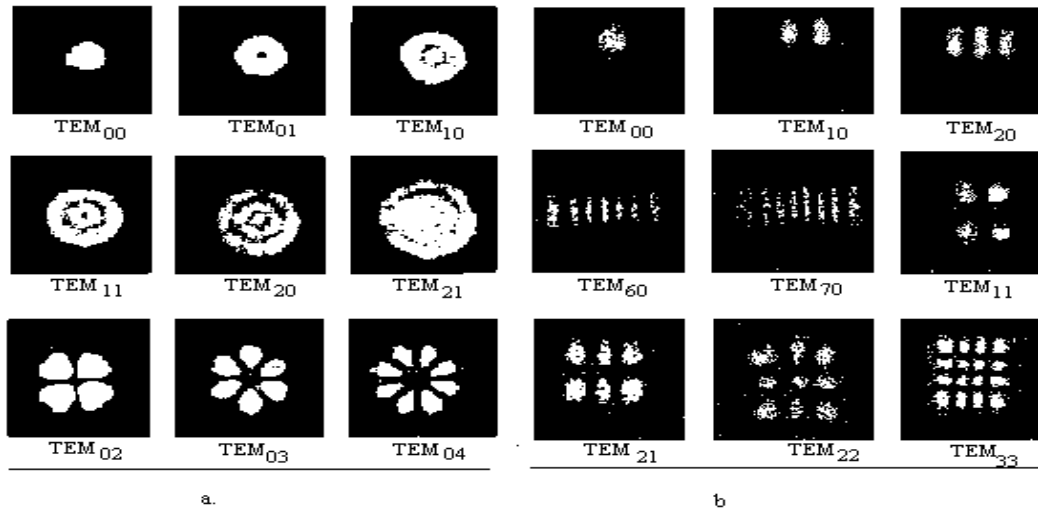


Figure 4. The images are indicated of the light distribution inside a laser resonator (with circular or square mirror) – the oscillation modes $THEM_{03}$ ($THEM_{mn}$) [B. Lengyel, 1968].

c) Bioluminescence BL laser properties is specific for every type of BLS (molecular, membrane, nuclear, cellular, organ, organism, social, planetary etc. For example – the brain may receipt 16 types of optical light information from every part of an eye and to amplify them as BL optic energy.

The optic information there are: a) primary (monochromatic frequency, intensity, phase, direction, sense); b) secondary or derivate information – that render inside brain the other optic information that form „complex imagines or optic hologram”. Simultaneous in the brain are coming another holograms. From hear comes „sonorous complex imagines” (with less information, about 12 types).

„*The final hologram imagine*” is formed by optic, sonorous, thermal, tactile, taste, smell, electromagnetic holograms that appear in glandular zone (pineal, hypophysis glands), and it is identified with „*frontal chakra*”, and is present in the culture of more religion (Judaism, Indian, China traditional medicine etc).

Under the optic stimulus action are producing „secondary biological laser effects” or BEMPh effects specific to every type of biologic system, as a precise succession, orderly by BL, that form a true „thermodynamic cycles” TC. They are associated with BEMPh effects, the absorption optical (accumulation) daytime and nighttime they run down the optic energy by secondary emission of BL radiation (natural phenomena).

Between the photon absorption (by π electron of phosphorus atom of $[(PO_4)^{3-}-H_2O-O_2]$ group) (fig. 2); their emission is realized as four successive B.E.M.PH phases (effects) (fig. 5).

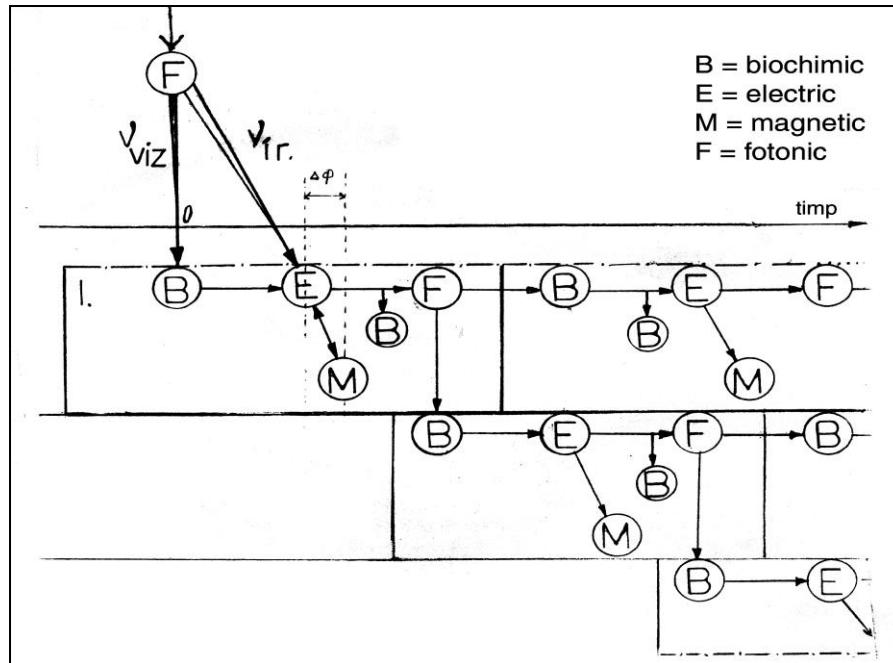


Figure 5. The succession of the BEMPH phenomena (effects) are correspondent to a „thermodynamic cycles” TC of the Semi conductive Molecular Biological Laser System level (Sem.Mol.BLS) at the cell membrane and it is between absorption and emission of radiation, with amplification (anti-Stokes rule of nonlinear optics) and diminishing of energy (as Stokes rule) (original design dr. Manu M.D.).

The amortizing of their effects is possible due to neutralization of local buffer systems. Every type of optical thermodynamic TD cycle has as characteristics:

- biochemical effects: water photolysis; polymerizations, isomerization, hydrolysis;
- electrical E effects – appearance of free photo-absorbent and energetic electrons;
- specific magnetic M effects;
- laser effects: holographic, thermal, plasma laser, etc.

The liquid crystals of the cell membrane as nonlinear medium (phospholipids, proteins, glucoses) have BEMPh properties specific of membranous BLS as (biochemical, electric, magnetic, photonic-holographic, thermal, plasma laser etc. The memory is a property which is due to a thin liquid crystals layer and is a characteristic of all cells of an organism. They separate the white light spectrum in two types of radiations – dexter-rotate (yellow and green) and laevogyrate radiations (red and blue-violet) (**fig. 6**).

Along the nervous system tract the cells are increasing as volume (accumulation of proper products and linked water) according to „the golden number”; that is why the intracellular distance between monochromatic focus (of a phase / on optic stimulus) is increasing and separated inside the internal cell space, as laser impulses appearance, and digital aspects too for electric potential of the nervous cells. The digital aspect is corresponding to successive maxim (ventre) and minim (nodes) of optical rays’ interference.

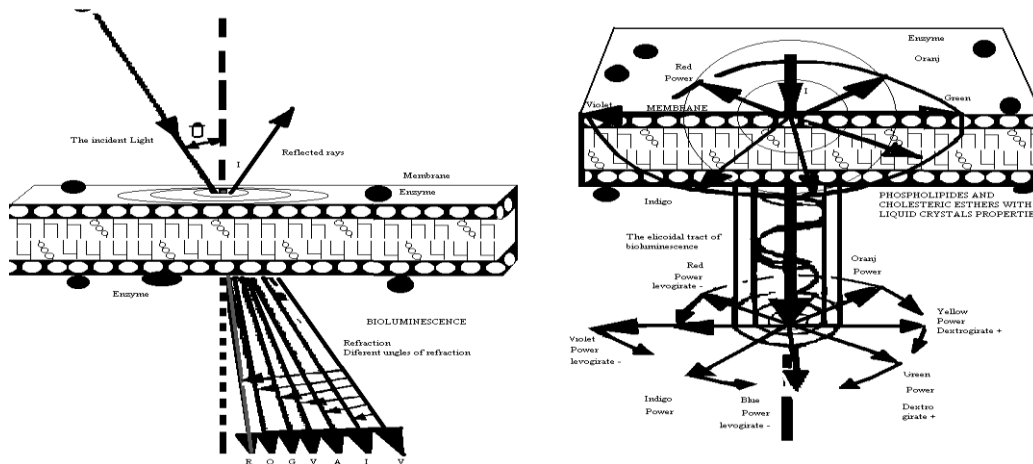


Figure 6. The Biologic Laser Theory. The membrane biophysical phenomena are due to the membrane liquid crystals (l. c.) properties as: optical (photonic), electric, magnetic and chemical too. As optic properties l.c. permit: transparence (the light is passing through) or opacity, the light polarization, reflection, birefringence in two radiation type (ordinary and extraordinary rays), dichroism – rotary tract (dexter-gyrate or laevogyrate), concentric propagation around the internal source of BL (molecule), laser transforming (monochromatic, coherence, directional to the system focus, and power – informational amplification as frequency modulation at phosphate-lipids level (deviation in UV or IR and their harmonics waves), and amplitude modulation towards the cell focus (original design Dr.Manu M D).

According to BLT, under the natural light are actions about 10^{13} fronts/seconds, and so the photo-sensible substances of the cell membranes is continuous bombard with visible (UV, visible, IR) radiations (photons) of visible spectrum, that are absorbed and appear water photolysis and hydrolysis of the membrane components. After absorption appear a continuous BL or LASER emission (as effect of energetic discharge or fluorescence or phosphorescence) and so it is electromagnetic amortizing and pH effect is neutralized.

It is possible that all systems to split all types of electromagnetic energy in two groups – „alpha α and omega ω „giving the two types of matter well known by chemists as „dexter-gyrate matter” and „laevogyrate matter”. The effects of this energetic organization are reflected in matter organization as structural and functional (BEMPh). In the Bible is mentioned about „alpha α and omega ω ” as about a secret of the world, as the Beginning and the End of the World.

- I realized a theoretic thermodynamic control (I applied nonlinear optics thermodynamic) and I done an experimental control of Biologic Laser Theory BLT. My tests were made at International Institute of Biophysics IIB Neuss (Germany) and they were original and special, but were possible only after I introduced some improvement in photomultiplier device structure (PMS 1) and the biophotonic, electronic and tissue -anatomic methods. I thank to the teachers who helped me to arrive at IIB Neuss and done possible the experimental studies (without them the Biologic Laser Theory could remain a philosophic theory): in Romania – Acad. Toma C., Prof. Dr. Strat M and G; IIB Neuss – Prof. Dr. F.A. Popp, Prof. Dr. Lev Belousov, Prof. Dr. R. van Wijk.

- BL is the biologic light form that is propagated from the eye to the brain; from the photo receiver cell it pass through optic nerves as similar „optic fibers”; the neurons grow up in the direction of BL propagation, as a power – informational amplification; the cell length (axons) are growing step by step from the photo receiver cell (10 μm) till the medulla motor-neuron, which arrive till 1-1,5 m (sciatic nerve) of an adult. The BL amplification is about 10 milliards (10^8).

- BL is basic in informational processes (psychic) by biophysics – holographic mechanism of (optic, acoustic, thermal, tactile, etc) perception, memory, thinking and sentiments too. The God and his son Iisus show us the importance of the BL amplification at the heart level, more than the brain level. The instincts are amplifying along the nervous track, and they are grow up simultaneous with BL: the thinking (emitted from the brain) is lower than hungry (emitted by the stomach), which is lower than the sexual instinct (sexual organs emitted) etc. There is a well known saying *The eye are seeing, but the heart asking*.

- We have an images or holographic thinking due to bioluminescence action [Manu, INI Iasi contract 1995-1997; 1999]. The holograms are specific to every type of analyzer and may be: optic, acoustic, thermal, and pressure, pH, electric and magnetic fields holograms. The peripheral organs are doing a graduate transformation of a specific form of energy as specific holograms that are transforming till to bioluminescence.

- For understanding the biophysical mechanism of the brain it must understand laser, holography, liquid crystals, nonlinear optics and electronic mechanism.

- The brain is working only with bioluminescence, as *optic holograms* form. The optic holograms are the only form of BL for the brain working, and they are transmitted through the nerves as „*optic fibers*”.

- The embryogenesis of sensitive organs take place under specific stimulus action, so: the eye appear under the visible light action, the hear appear

under the sounds action, etc.

- The eye is transmitting about 16 types of optic information, with a maximum speed; the skin is transmitting thermal and pressure holograms – as about 14 types of information; the hear about 12 type, the nose and the tongue transmit chemical information about 10 types .

- In the brain these optic holographic information pass through fronts of cells of the same generation, where they are analyzed and synthesized, and it result optic interference effect, which is influenced by the membrane filter (optic / magnetic memory of thermo-trope liquid crystals of the cell membranes); the optic resultant is transmitted by nerves towards peripheral organs, the executants (muscles, articulation, glands) – daytime.

- The brain physiology rules established that the brain had to receive a constant energy for a normal structure and function, but don't indicated what type of energy it is talking about.

- Existence of feed-back system may control, limit and command the peripheral stimulus intensity and density.

- The tampon systems are transported by the cardio vascular system and it permits the holograms changing, the dynamic aspects of perceptions, and the holograms moving.

- These mechanisms are embryo genetic treasure, and they is a continuous changing of the BL sense of propagation, that is well illustrated by Yin-Yang symbol.

- The BL sense of propagation is changing nighttime, awing to macro energetic compound (which are accumulated daytime).

- Every type of biologic system (molecule, membrane, nucleus, cell, organ and organism) has a specific character for the length and intensity of nighttime BEMPh effects.

- Daytime – a grate part of photons number are accumulated in water and macro-energetic compounds.

- Nighttime these energies are discharged and they are entertain the BL emission.

- Where the light / bioluminescence don't enter, the cells are dieing, and appear paresis, paralyses, and atrophies. That is happened when the optic track is modifying if: some compressions are action on the nerves tract, if is modifying the cell concentration of water and minerals (*activators and inhibitors of bioluminescence*).

- As a consequence of bioluminescence action may appear plus high energy diseases due to: a long exposure, or a high density of the optic stimulus, high frequencies, and intensity.

- So for the body well maintenance, it is necessary an energetic equilibration between the accumulated energy and the discharged energy, an alternation between slip (eyed shut) and conscientious state, as nighttime - daytime.

Another confirmed BLT hypothesis treats with:

- ❖ The BL qualities, which are different from one system to another, increasing the BL degree of complexity as power and information, increasing of the structural and functional complexity of the biologic systems;

- ❖ The light L is transmitted it's qualities to BL, so light and bioluminescence have a role in biologic systems structuring and functioning.

- ❖ L and BL have an important role in the cell division and differentiation for specific tissues till to sexual cells, with a specific high degree hologram(of an entire organism);

- ❖ L and BL are organizing the living matter from good the beginning with the egg cell division, during embryogenesis, and they determine the living matter organization in *Intricate Biologic Laser Systems IBLs* (whose symbol is „concentric circles”) and *Linked Biologic Laser Systems LBLs* (whose symbol is a successive volumes as „golden number” $\varphi = 1,618$ (**fig. 1**), a constant which represent a constant amplification between two successive and the same type measures (volumes, length, numbers) (**fig. 7**).

- ❖ So, it is possible to understand now the truth of syntagma „all have seed after their type” (The old Testament. Genesis.);

- ❖ But there were known the inferior form of bioluminescence, which are subordinated to organism as a whole: the BL molecular, nuclear, membrane, cellular, organ and organism biologic systems? It seems yes, but were remained symbols of an old, disappeared science (thousands of years ago), from which there are kept a lot of signs in every of the world existing religion, so that no people don't have monopole of that old civilization. We found out some old sign of a disappeared science. Now we may connect the advanced scientific researches.

- ❖ Under the L and BL action there are develop the thermo-dynamic cycles, which are specific to every type of biologic system, every type with it's own BEMPh phenomena. The fact it is possible to be understood if we apply nonlinear optics to optic phenomena of biological system (bioluminescence). So, the theoretic and biophotonic tests permitted to me a perfect representation for the

thermodynamic cycle of an sem.mol BLS as a similar symbol of “Yin-Yang” type, as it was represented in an old cave of our country, at Şercaia. I consider that this symbol survived to an old science that disappeared, but let us a lot of sigh spread in different part of the world (as acupuncture, press puncture – that have no real scientific biophysics explanations.

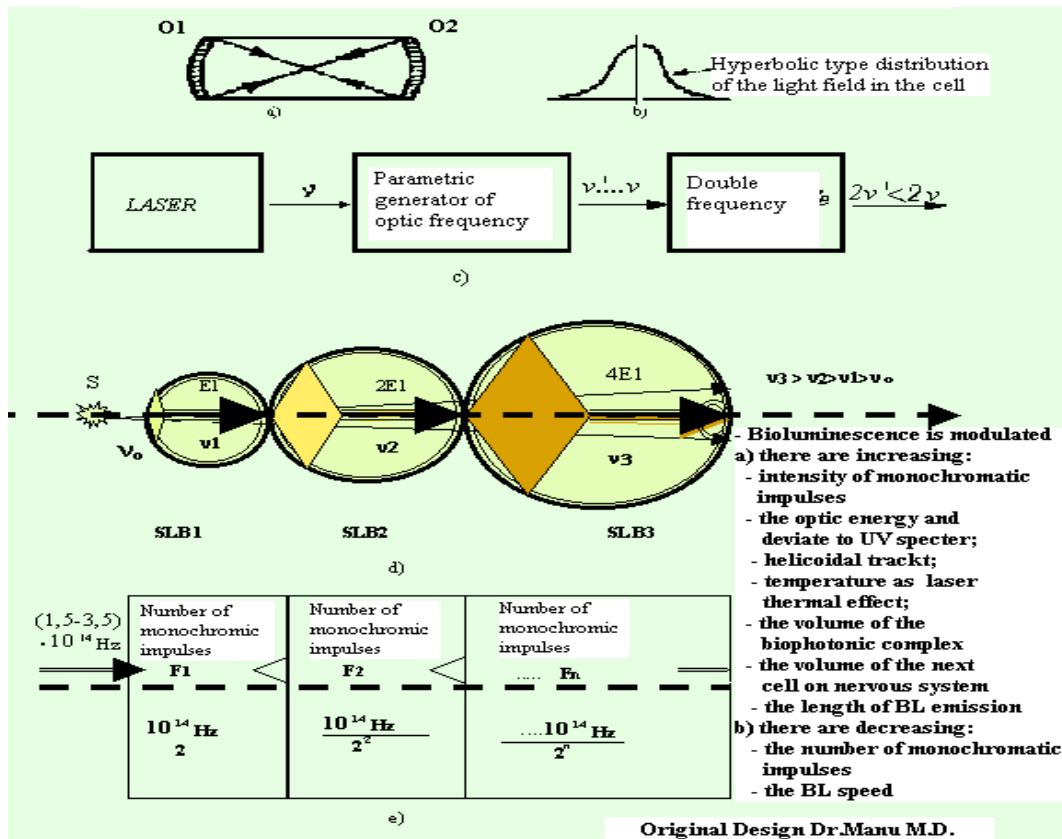


Figure 7. The two modes of the bioluminescence power amplification are: a) the amplitude modulation (a, b); b) the frequency modulation due to the laser active substance (KDP Kallium Diacid Phosphate – water – molecular oxygen) as a „parametric optic frequency generator”(c, e); the cell’s bioluminescence is rendered by the volume increasing as „golden number” shows (d).

It is possible as „the God Sun”, Iisus Hhristos, to know at his time more than anybody else, and to know the bioluminescence phenomena BL, it’s laser characteristic, so that he told to people about “the light from light” as a sintagma more less to be understand than „laser phenomena”, it scientific explanation was not of interest of the people of that time. How could Jesus to explain to people about the unknown force of bioluminescence, that it is able of malefic or benefic forces? How to explain to people what is BL and how BL appear, or which are its secondary effects at human eye, brain or organism level, at social level? How Iisus could be understood if in his time nobody heard about „lasers, holography,

nonlinear optics, liquid crystals, electronic”? That is why he tell us about „light from light” and indicated the human being as source of BL, produced by a „*born being, not a maiden one*”, so “*Believe*” show us.

What signs exists for BL as laser phenomena? But He told us „Light from light” and indicated the eye, the mind, the heart importance for a puritan life, for good and the God, as a superior force, connected at the man wishes. He indicated so the nature of the „divine light”, it’s source – man, human nature of BL. „The God Eye” appear as an isoscel triangle – a bible symbol that perfectly reflect the light coherence and interference at the eye level – and indicated the eye as „biological laser system”, according to BLT. Jesus himself show us the modality of BL obtaining, show us „the light way”, which start from the eye level . Jesus attention people about a possible amplification of bioluminescent stimulus, of the light, starting with the eye level, brain and body, and attention the importance of our mind of hate and revenge or crime („death for death” as an Old Testament principle), for „karmic diseases” mechanism, that could produce own diseases, and could spread.

„34. The Body light is your eye. When your eye is clean, than all your body is in lighted; but when your eye is bad, than your body is getting dark”.

„36. So, if your body is enlightened, no dark part having, entire body will be enlightened, as a torch that light you with its glitter”

The New Testament, Matei, Cap. 11 – 34, 36

Jesus showed to his disciples the condition of superior positive forces obtaining by himself example, so: the conviction in the Father God, prayers for our own mistakes and of our mistaken people, love till to sacrifice for our „nearest” people, showed us who is „nearest people”, how to purify the minds trough kindness, and for other sacrifice.

To eliminate the dark part, malefic of our minds, the negative biologic energy, it is asking for every Christian to „love” his enemy for being happy. That is rendered by sintagma „happy the poor people, (but) with soul” etc.

The human filter modify the qualities of these force, which may increase with every man which come to meeting and is praying at the God (in a church/synagogue etc.). For being strong and white the bioluminescence have to be purified by all hate and revenges, and so the good minds may be directted for „good” doing, for recovering other people and himself. For any miserable man who choose „the belief way” he has to be „forgiven” and his sole arrives in paradise; not the same for unbelievers, whose sole remains in „the Gheena fire”.

Iisus initiated the discipols and show to people a personal example (a greate sensibility and a greate force in the same time), how much is the human bioluminescence force:

- To settle down the storm, the wind and the sea waves (as the storm on the sea);
- The walking on the water waves;
- Clarvisions (he anticipated Juda’s treachery and Petru’s cowardice);
- He shows the possibility of communication at distance (telepathy) (with the God in Getsimani Gardens);
- Recovering for: eye (blindness), body (paralises), brain (epilepsy);
- Recovering at distance owing to faith (the servant recovering);
- A great sensibility at touching (he felt when somebody touched him and asked „Who touched me?”);
- He calmed pschiatric angry invalids;
- He removed „the devils” of a man and rushed them in a pig herd;
- He recovered a dead man after four days (because a disease death) (Lazăr and samaritean daughter);
- He come to life three days after his death, after his whipping, the nails were beaten in his hands, he support derision, and was stitched with spear and kilt;
- He show us the God protection, His forgiveness for our sins and our souls tranquility for those who reconize their mistakes and ask forgiveness for that (Maria Magdalena ş.a.)

But did the people understood all these? No, because those who had to teach them the good way in life hated him, they blamed him for his words and facts, they condemned him to death and crucified him, the Man who came to forgive mans and womans for their mistakes, and love them. So we shell understand his statement „who have hears for hearing, to hear (to understand)”.

How could Iisus explain at that time to peoples that exist forms of bioluminescence superior to any human beings? He told them that the spirit forces are the God forces and asked them: „Give to Cesar what is of Cesar and to God, what is of the God”.

According to BLT the superior biological laser systems are: social BLS and BL, planetary BLS and BL, *galactic BLS and BL*, *Universal BLS and „the God” BL as Bl power and information*, the God who was never saw. These forms of BLS and BL have an unknown power and information for that time, but which persists till our days. They are proofs about knowledge of these superior forms of BL in the cultural history of many disappeared peoples. So „nothing new under

the Sun rays". In the people histories have remained a lot of „scientific symbols" of this systems and phenomena that are linked to Biologic Laser Theory (BLT), nonlinear optics and laser of our days (**fig. 8**).

The BLT studies development permit us to reconsider the legacy of disappeared cultural peoples, and to open windows to very advanced civilizations, maybe extraterrestrial ones.

Thousands of years ago all these BLT symbols were known and descript in some documents as „*The manuscripts of the Dead Sea*". In time, in a smallest world (shake by cataclysms) these information were wiped out and their scientific significations were lost, possible to be understood only by a few initiates, for the others they remained as symbols, that we recovered our day scientific domains.

There are rendered and discussed different BL symbols, the BL power and information which is transmitted along the nervous system, from one neurons to another. So, at the brain level are converging all types of energies, which are generating psychic energy (noted as Ψ Psi) or cerebral laser phenomena, that manifest properties or secondary BEMPh effects specific for brain level. I calculated the brain's wave length (about 10000 km), it's emission frequencies based on technical physics formula, laser's formula etc. The power-informational amplification start from the eye level to brain, medulla, sexual organs (cells), muscles, inferior members bones (where BL arrived to maxim values). So the *psychic energy* Ψ (Psi) BL is at origin of all instincts (as *organ biological laser phenomena*).

Why do you believe that it was necessary as „the ten laws" to be kept inside the Cheviot? The cheviot had to defense the science inside cheviot space, the laws for soul clear kipping.

The base for multidisciplinary studies of the Biologic Laser Theory was presented as theory and experiment (biophotonic, electronic, tissue –anatomical studies) in Dr. Manu M.D doctoral thesis, which was published as scientific book: Manu Mariana Daniela, *Biologic Laser Theory, The effects of (optical) electromagnetic fields at the living cell level (biofotonics perspective)*, Zboina Publishing House, Iași, 2007. The studied domains were:

I. Theoretical multidisciplinary studies: a) biology and medicine domains as: anatomy, physiology, biophysics, biochemistry, ophthalmology, neurology, embryology, cell biology, histology, vegetal anatomy and vegetal physiology; b) in technique physics domain: nonlinear optics, electronics, laser, holography, liquid crystals etc.

II. Experimental studies: biophotonic methods, electronics and tissues-anatomic methods.

BLT hypothesis were established after long period of multidisciplinary studies (medicine, biology, physics, technique). The BLT hypothesis had to be for good the beginning elaborated in conditions of a lot of unsolved problems of every medicine domain, and later they had to be verified as experimental and thermo-dynamic methods, they had to create new adequate methods and devices. For experiments I had to improve first the photomultiplier device PMS I, but the biophotonic (electronic and tissues-anatomic) methods too, for new type of original experiments, new for International Institute of Biophysics Neuss (Germany). The biophotonic domains of application are presented in figure (fig. 9). The hypothesis confirmed by tests, were tested as thermodynamic method too, and so they became conclusions of BLT studies, the hypothesis were experimental confirmed. For all these it is necessary the found an International Institute of Bioluminescence IIBL, unique in the world, at Iași, România, for joining biological and technical domains, for solving the medicine problems, and develop common research themes, new directions in regenerative medicine, oncology, embryology, ophthalmology, neurology, psychiatry, all physics domains, bionics, genetics engineering, astrobiology etc.

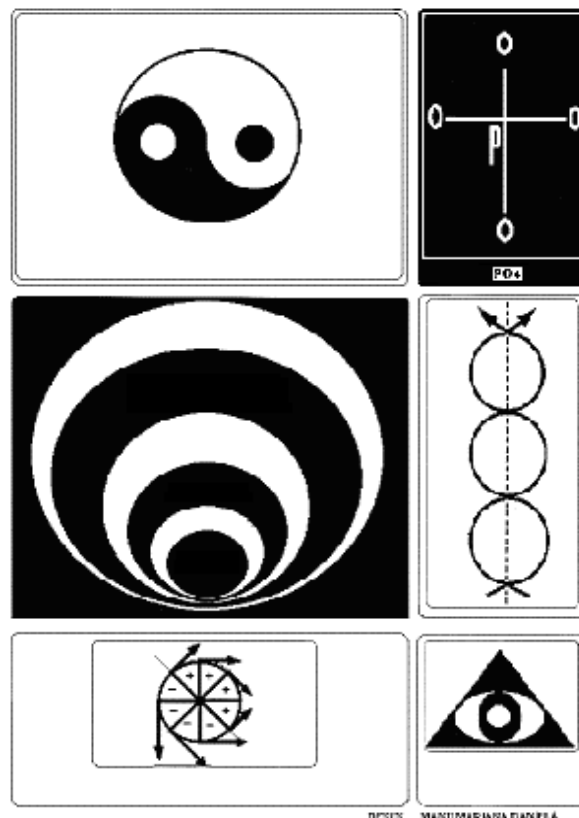
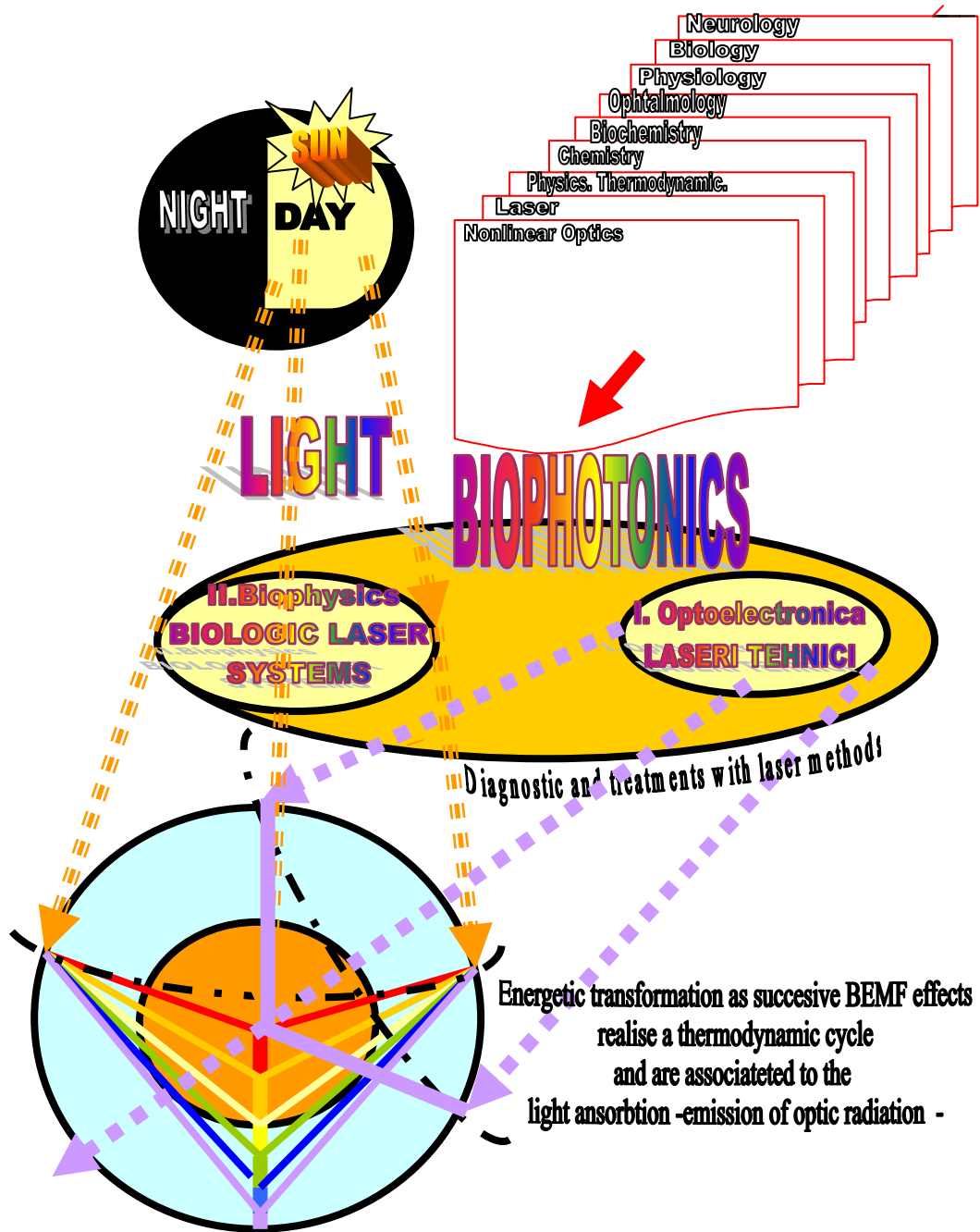


Figure 8. Ancient symbols that I consider to be sign of a lost science, that represent the bioluminescence transforming (original design Dr. Manu M.D).



Original design
Dr. MANU DANIELA MARIANA
 Iasi

Figure 9. Biophotonics domains: a) technical laser; b) biological laser systems and biological laser phenomena –The Biological Laser Theory (fundamental multidisciplinary studies) and experimental multidiscipline studies: biofotonics, electronics, tissues-anatomic (original design Dr. Manu M.D.)

REFERENCES

- [1] *Biblia sau Sfânta Scriptură*, Editura Institutului Biblic și de Misiune al Bisericii Ortodoxe Române, București, 2006.
- [2] Manu Mariana Daniela, *the author of cap.1, cap. 2, cap. 3, cap. 4,(p. 8-89), cap. 6 (p. 144-160), cap. 7 (p. 170-177), p. 115-125, p. 185-187, in Traian D.Stănciulescu, Daniela M.Manu, Metamorfozele luminii. Fundamentele biofotonice ale conștiinței*, ediția 1, Editura Performantica, Iași, 2002.
- [3] Manu Mariana Daniela, *An integrative model of the human body: unconventional hypotheses of the „Biological Lasers” Theory*, în Stănciulescu Traian D., Manu Mariana Daniela, *An integrative model of the human body: unconventional hypotheses of the „Biological Lasers” Theory*, Program and abstracts p. 123, Inter-Congress *The human Body in Anthropological Perspectives of IUAES 2002, Toshy Center Hotel, Tokyo, Japon, September 22-27, 2002*.
- [4] Manu Mariana Daniela, *„Implicații ale biofotonicii în explicarea procesului de fotosinteză (teorii existente și contribuția teoriei laserilor biologici)”*; referat doctorat, Catedra de Biologie Celulară Universitatea Al. I. Cuza, noiembrie 2003.
- [5] Manu Mariana Daniela, *„Corelații între efectele câmpurilor electromagnetice și forma, structura și memoria celulei vii”* – referat doctorat, Catedra de Biologie Celulară Universitatea Al. I. Cuza, noiembrie 2003.
- [6] Mihai V. Botez, Daniela M. Manu, Vasile Bodnar, Toader Matei, Mihaela Radu, Viorica Puiu, *Fitoterapie clinică*, Editura Pim, Iași, 2005, cap. VII (pp. 137-247).
- [7] Mihai V. Botez, George F. Frunză, Viorel Donțu, Daniela M. Manu, Mihaela Radu, Ioan Pârvulescu, *(Bio)laserterapie integrală, vindecarea prin lumină vie*, Editura Pim Iași, 2005, cap. VII 1.1 (pp. 117-129), 1.2 (pp. 142-147), cap. IX (pp. 163-175).
- [8] Manu Mariana Daniela, *Teoria Laserilor Naturali*, Primul Simpozion Internațional „D.I. Mangeron, Nicolae Oiță, Anastasie Bașoță”, Universitatea „Al. I. Cuza” Iași, 22-26 iunie 2005, pp. 131-148.
- [9] Manu Mariana Daniela, *Teoria Laserilor Naturali și teoriile derivate – Teoria Laserilor Biologici Manu-Stănciulescu*, Conferința Internațională de Terapii Complementare și Alternative, a 9-a ediție, 23-25 septembrie 2005, „Vasile Goldiș” University Press, Arad, 2005.
- [10] Manu Mariana Daniela, *Aplicații ale teoriei Laserilor Biologici Manu-Stănciulescu. Teste originale de biofonică a sistemelor vii cu implicații în diversificarea energetică a țesuturilor și stimularea imunității*. Conferința Internațională de Terapii Complementare și Alternative, a 9-a ediție, 23-25 septembrie 2005, „Vasile Goldiș” University Press, Arad, 2005.
- [11] Manu Mariana Daniela, *Biophotonics tests implied in evidence of the fish cell differentiation. Scientific Anuals of „Al. I. Cuza” University (new series), Section I, Animal Biology*, „Al. I. Cuza” University Publishing House, Iași, Tom LI , 2005, pp. 267-277.
- [12] Manu Mariana Daniela, *Teoria Laserilor Biologici. Model de reprezentare pe scări logaritmice a mărimilor spectrale și energetice ale luminii*, a 2-a ediție a Simpozionului

- Internațional „D.I. Mangeron, Nicolae Oiță, Anastasie Bașotă”, Universitatea „Al. I. Cuza” Iași, 20-22 iunie 2006.
- [13] Manu Mariana Daniela, *Aplicații ale Teoriei Laserilor Biologici în neuroștiințe. Mecanisme biofizice ale proceselor psihice*, Compendiul celei de-a XVII-a Conferințe Internaționale de Inventică „Cercetări și Tehnologii Inovative Performante”, Salonul Internațional al invențiilor, cercetării și transferului tehnologic în protecția mediului Ecoinvent 2007, 30 mai-2 iunie 2007, Editura Performantica, Iași, 2007, pp. 18-31.
- [14] Manu Mariana-Daniela, *Teoria Laserilor Biologici, I – Efecte ale câmpurilor electromagnetice optice la nivelul celulei vii, din perspectiva biofotonicii*” (Ediția I, iulie 2007), Editura Zboina, Iași, 2007.
- [15] Manu Mariana Daniela, *Teoria Laserilor Naturali. Ipoteze privind mecanismul fizic al tornadelor. Măsuri de combatere*, a 3-a ediție a Simpozionului Internațional „D.I. Mangeron, Nicolae Oiță, Anastasie Bașotă”, Universitatea „Al. I. Cuza” Iași, 22-26 iunie 2007 (în curs de apariție).
- [16] Manu Mariana Daniela, *The Living – Matter Bioengineering. The Biological Laser Theory. The fish cell differentiation and bioengineering, Biophotonic tests*, The Proceedings of the National Symposium with International Participation E-Health and Bioengineering – EHB 2007, 16-17th November, 2007, Iasi, Romania, Revista medico-chirurgicala a Societății de Medici și Naturaliști Iasi, vol. III, Aprilie-Iunie 2007, nr. 2, Supli. 2, First Edition, Iasi, November, 16-17th, 2007, pp. 207-212.
- [17] Stănciulescu, Traian D., *Există o cale a rațiunii către Dumnezeu ?*, Editura Timpuri, Deva, 1990.
- [18] Stănciulescu, Traian D., *Viață înaintea vieții?*, Editura Timpuri, Deva, Intercontempres, București, 1991.